

# Mission briefing chart



F/A-18C TRAINING NIGHT CLOUD

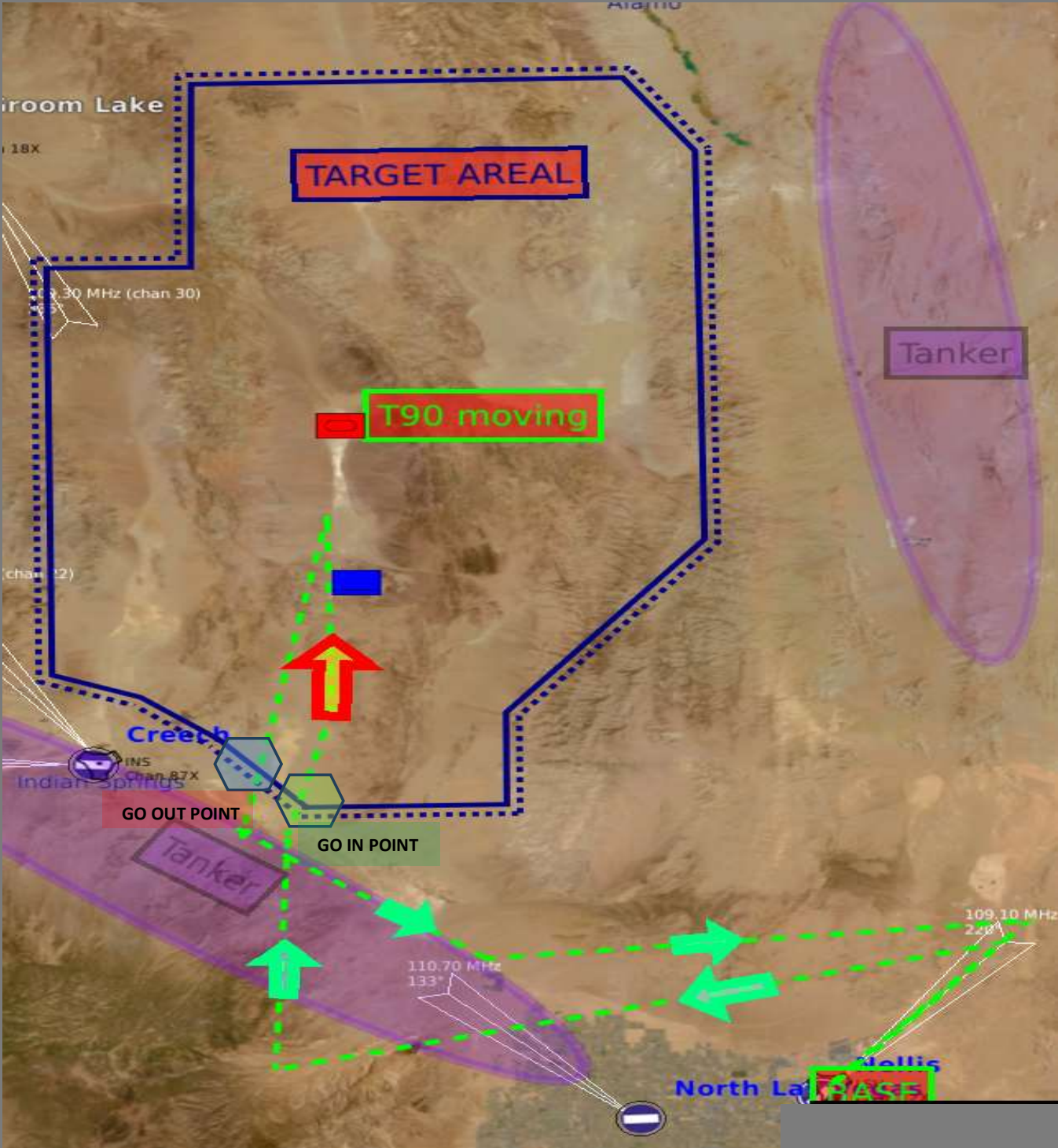
GENERAL INFORMATION

CALLSIGN		DODGE 1		MISSION NUMBER		10-29NT_SP_MavT_FA18C		
WEATHER		20°C; QNH 787 / 31.00; QFE 703.78 / 27.71; BASE 3360; Cloud						
AIRFIELD		A/B	TWR	ELEV,m	RWY	TIME		
	DEP	Nellis AFB	327.000	561	03R	18:45		
	ARR	Nellis AFB	327.000	561	21L	19:30		
	ALTN	Creech AFB	360.600	952	08			
FLIGHT		PILOT	A/C	LOADOUT		Task	FULE	
	Leader	DODGE 1	F/A-18C	View load chart!		Training	100%	
	WM1	-	-			-	-	
	WM2	-	-			-	-	
	WM3	-	-			-	-	
PACKAGE		N/A	A/C	VHF	UHF	D-Link	TASK	
	-		-	-	-	-	-	
	-		-	-	-	-	-	
	-		-	-	-	-	-	
	-		-	-	-	-	-	
WP	COORDINATE			NAME	ACTION	TIME	DIR	ELEV ft
0	Nellis AFB C01			ParkPos	GoIn	18:20	-	1843
1	Nellis AFB RWY 03R			RWY	Line-Up	18:45	03	1841
2				TakeOFF	TP	18:48	03	10000
3				WP3	TP	18:53	256	15000
4	Training begin		L O O P	EntryPoint	Electric ON	18:56	3	15000
5				ObsPoint	Scann	18:57	30	15000
6				IP	Weapon GO	18:59	339	15000
7				Return	TP	-	216	10000
8				WP4	TP	-	131	15000
9	Nellis AFB			Approach	TP	-	84	8000
10	Nellis AFB RWY 21R			RWY	TP	-	220	-
11								
12								
13								
14								
		IN	OUT	JOKER	BINGO	TOTAL	PLAYTIME	
FENCE	4		7	FUEL	2500	2000	10820	00:45

WP INFORMATION

MISSION NUMBER 10-xx

Picture



## TACTICAL INFORMATION

MISSION NUMBER 10-19NT\_SP\_MavT\_FA18C

TASK Maverick Training

Text / Picture

DESCRIPTION

1. Switching on electrical equipment for ATFLIR and Maverick. WP 3
2. Search and scan for targets, Entry and Ops Point.
3. Target, four T90 Tank in convoy!
4. Attack only four Tank T90!
5. When all Mavericks have been fired, report Douglas 3!

### T-90

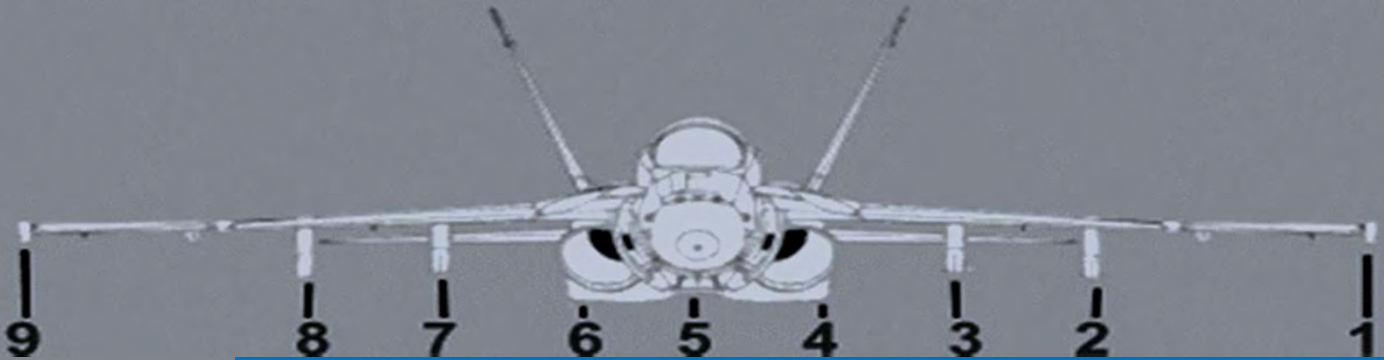











F/A-18C

LOAD INFORMATION

MISSION NUMBER	00-05NT_SP_MavT_FA18C	
NUMBER	123	
PARK POSITION	C04	
FUEL	20%	REFULE
LOAD	YES	



1	AN/ASQ-T50	
2	AGM-65F	
3	AGM-65F	
4	AN/ASQ-228	
5	X	
6	X	
7	AGM-65F	
8	AGM-65F	
9	AIM-9M	



AGM-65F  
IF

TNT 136 kg  
Kg 306  
Length 2,49 m  
Diameter 0,305 m  
Range 25 Km effektiv 6-9 km  
Infrared

ONLY IN ZONE 3 OR WITH LASERS!



AGM-65E  
Laser

TNT 136 kg  
Kg 293  
Length 2,49 m  
Diameter 0,305 m  
Range 20 Km  
Laser

RADIO | TACAN | ILS | INFORMATION

RADIO	COMM 1 and COMM 2		CHANNEL	WHAT		Mod
		251.000	1	Air Command		AM
		327.000	2	Nellis AFB		AM
		270.100	3	Nellis AFB ATIS		AM
		360.600	4	Creech AFB		AM
		290.450	5	Creech AFB ATIS		AM
		252.000	6	Tanker group 1		AM
		130.000	7	ADF JTAC group pos		AM
		132.000	8	ADF Air Command pos		AM
		150.000	9	EWR-NEVADA (Pinpoint)		FM
		136.000	10	JTAC 1 Axeman <b>Zone 1</b>		FM
		137.000	11	JTAC 2 Darknight <b>Zone 2</b>		FM
		138.000	12	JTAC 3 Warrior <b>Zone 3</b>		FM
		139.000	13	JTAC 4 Hammer <b>Zone 4</b>		FM
		45.000	14	Group channel		FM
		300.000	15	AWACS		AM
TACAN	TACAN	WHAT	CODE	RADIO	CALLSIGN	TYP
	X 87	Creech AFB	INS	360.6		
	X 12	Nellis AFB	LSV	327		
	Y 1	Tanker 1 group 1	ALFA	252	Texaco	KC-130
	Y 5	Tanker 1 group 2	CHARLIE	258	Texaco	KC-130
	Y 10	Tanker 2 group 1	DELTA	252	Arcor	S-3B
	Y 11	Tanker 3 group 1	FOXTROT	252	Shell	KC-135 MPRS
	Y 20	Tanker 2 group 2	HOTEL	258	Arcor	KC-130
	Y 22	Tanker 2 group 3	JULIETT	255	Shell	KC-135 MPRS
	Y 24	Tanker 3 group 2	LIMA	258	Arcor	KC-135 MPRS
	Y 25	Tanker 3 group 3	PAPA	255	Shell	KC-135
ICLS	CH	WHAT	CODE			

AIRPORT INFORMATION

NAME	Nellis AFB			MAP	Nevada	
TOWER	327.000	132.550	38.700			
TACAN	X 12	ADF	-			
		RWY				
ILS	109.10	21R				
						TAKE-OFF
						03R
						Landing
						21R

Park

Position

View load chart

TAXI TO

03R

VIA

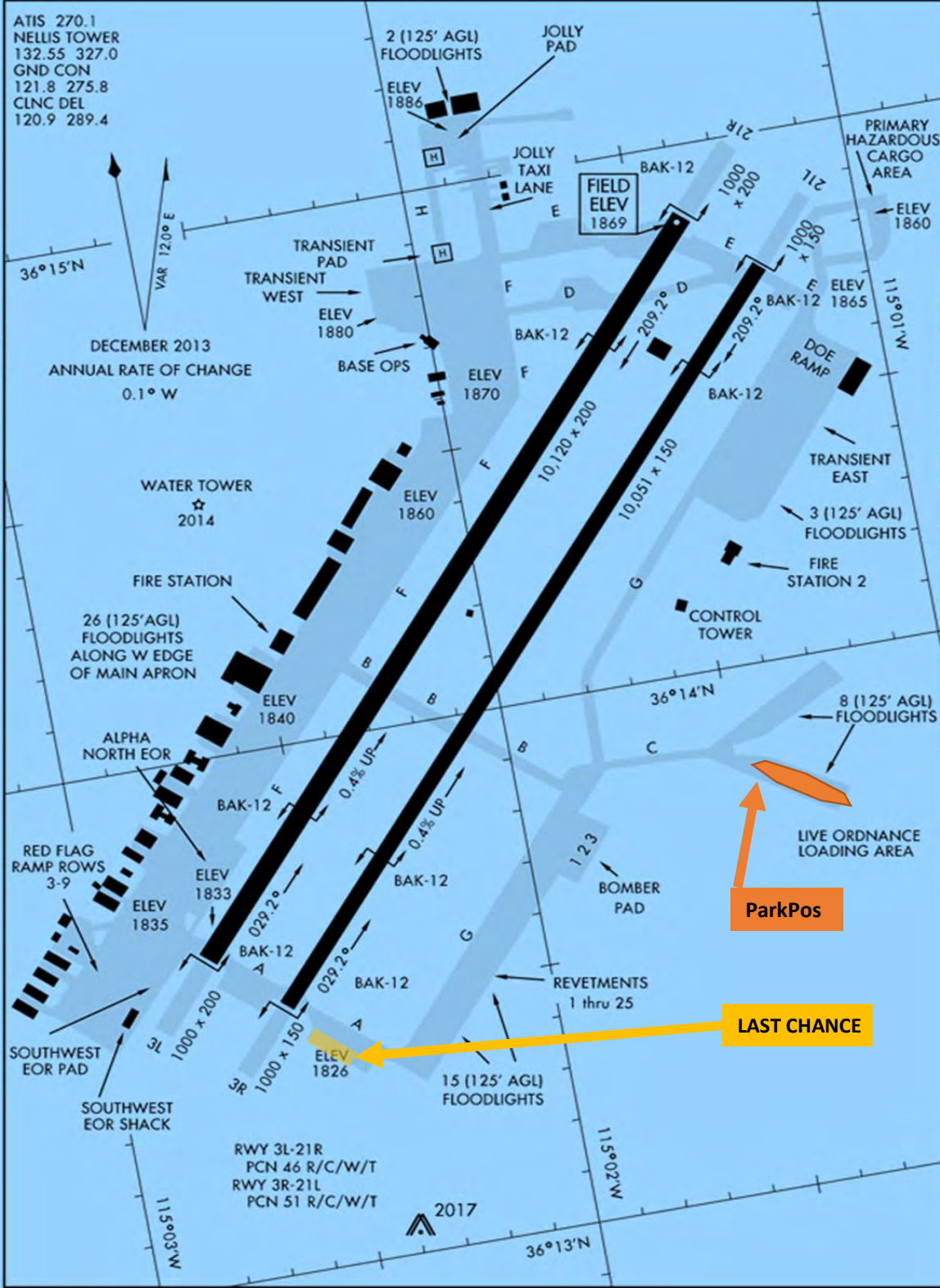
C

G

A

LAST CHANCE

TAKE-OFF



TAXI FROM
21R
VIA
B
CROSSING
03R
VIA
B
C
OR
A
G
C



AIRPORT INFORMATION

NAME	Creech AFB			MAP	Nevada	
TOWER	360.600	118.300	38.550			
TACAN	X 87	ADF	-			
		RWY				TAKE-OFF
ILS	108.70	08				08
Park						Landing
Position						08

TAXI TO
08
VIA
F
C
B

LAST CHANCE  
TAKE-OFF

TAXI FROM
08
VIA
F
B

